



# RIVERBRIDGE REVIEW

Autumn Term

Week 13

5<sup>th</sup> December 2025

The children across the school are busying themselves in preparation for next week's Christmas productions. Performing to an audience is always a great opportunity to develop confidence, self-control and team spirit. I'm certainly looking forward to seeing and hearing the fruits of everyone's labour.

Nursery parents will I hope, have really enjoyed visiting the classroom this week. The Stay, Play and Learn sessions are always popular and certainly helpful. In the New Year, there will be opportunities for parents in Reception and Year One to also come in and work alongside the children. Make sure you sign up for these.

In the parent questionnaire, there were some useful suggestions for us to consider. One was around the Open Classrooms that take place at Park Avenue. Some parents have suggested that these take place on the final day of the term when we finish earlier than normal. We have considered this and will trial this at the end of the spring term - Friday 27<sup>th</sup> March 2026. This term's Open Classroom will take place on Wednesday 17<sup>th</sup> December. Please see a section below for more details.



**Year 1 enjoying their visit from Chertsey Museum**



**Thank you to everyone who helped make the PTA discos a success**



**Nursery enjoying stay, play and learn**

The focus for this week's assemblies and PSHE lessons has been kindness. I know there have been lots of conversations about this across the school. Aviran in 4GT shared a useful checklist with me yesterday that he had created at home. We used this in today's assemblies and I am also sharing this with you all.

*Say nice things to people – don't make fun of them.*

*Look after resources – don't take things that don't belong to you.*

*Be kind in how you act – don't harm others and include people when you are playing a game.*

Thank you for your efforts, Aviran!

Thank you also to the PTA! The panto on Sunday was a real laugh and was enjoyed by all - according to the feedback I received! The disco on Wednesday was also fun-filled! To all the volunteers that supported both events, I share my thanks.

Finally Mrs Bruton has welcomed a new addition into her family. A baby boy was born (a few weeks ago) and I am sure that you will all join me in sending congratulations to them all!

### **Stay, Play & Learn Sessions**

### **Reception**

Reception would like to welcome you to a stay, play and learn session week commencing Monday 12<sup>th</sup> January. There will be 5 sessions per class, running each morning that week. Due to capacity, we are offering 6 tickets per session, and ask only 1 adult attend per child, with no siblings please.

Please see below the booking links for each session:

[RG Stay, Play & Learn Monday 12<sup>th</sup> Jan 8.40am-10am](#)

[RG Stay, Play & Learn Tuesday 13<sup>th</sup> Jan 8.40am-10am](#)

[RG Stay, Play & Learn Wednesday 14<sup>th</sup> Jan 8.40am-10am](#)

[RG Stay, Play & Learn Thursday 15<sup>th</sup> Jan 8.40am-10am](#)

[RG Stay, Play & Learn Friday 16<sup>th</sup> Jan 8.40am-10am](#)

[RAN Stay, Play & Learn Monday 12<sup>th</sup> Jan 8.40am-10am](#)

[RAN Stay, Play & Learn Tuesday 13<sup>th</sup> Jan 8.40am-10am](#)

[RAN Stay, Play & Learn Wednesday 14<sup>th</sup> Jan 8.40am-10am](#)

[RAN Stay, Play & Learn Thursday 15<sup>th</sup> Jan 8.40am-10am](#)

[RAN Stay, Play & Learn Friday 16<sup>th</sup> Jan 8.40am-10am](#)

[RHT Stay, Play & Learn Monday 12<sup>th</sup> Jan 8.40am-10am](#)

[RHT Stay, Play & Learn Tuesday 13<sup>th</sup> Jan 8.40am-10am](#)

[RHT Stay, Play & Learn Wednesday 14<sup>th</sup> Jan 8.40am-10am](#)

[RHT Stay, Play & Learn Thursday 15<sup>th</sup> Jan 8.40am-10am](#)

[RHT Stay, Play & Learn Friday 16<sup>th</sup> Jan 8.40am-10am](#)

### **Stay, Play & Learn Sessions**

### **Year 1**

Year 1 would like to welcome you to a stay, play and learn session the first week back after Christmas. There will be 2 sessions per class running that week. Due to capacity, we are offering 15 tickets per session, and ask only 1 adult attend per child, with no siblings please.

Please see below the booking links for each session:

[1C Stay, Play & Learn Wednesday 7<sup>th</sup> January 9am-10am followed by a Phonics session 10-10.20am](#)

[1C Stay, Play & Learn Thursday 8<sup>th</sup> January 9am-10am followed by a Phonics session 10-10.20am](#)

[1D Stay, Play & Learn Wednesday 7<sup>th</sup> January 9am-10am followed by a Phonics session 10-10.20am](#)

[1D Stay, Play & Learn Thursday 8<sup>th</sup> January 9am-10am followed by a Phonics session 10-10.20am](#)

[1BR Stay, Play & Learn Wednesday 7<sup>th</sup> January 9am-10am followed by a Phonics session 10-10.20am](#)

[1BR Stay, Play & Learn Thursday 8<sup>th</sup> January 9am-10am followed by a Phonics session 10-10.20am](#)

### **Open Classrooms**

### **Year 2-6**

On Wednesday 17<sup>th</sup> December there will be the opportunity for you to visit your child's classroom for them to share the learning that they have completed over the course of the term.

At Park Avenue, the gates will open early on Wednesday 17<sup>th</sup> December at 3:10 to allow time for you to look at your child's learning in their classroom.

The gates will remain open until 3:30pm so if you are also collecting children from KGB, please do this first as you usually would before coming in to visit the classroom.

Please remember that children in Years 5 and 6 who have permission to walk home alone must wait until 3:20 before being dismissed by their class teacher and we ask that parents coming in at 3:10pm spend time in the classrooms and children are not collected early.

We have received some feedback around that and are aware some parents feel that this would be more appropriate on the last day of term given the early finish and the impact this has on those requiring time off work. This is something that we will be reviewing in the Spring term and will share further details about after February half term.

### Christmas Performance

Year 5

On the 10th of December, Year 5 will be wearing school uniform not PE kit. This is because of the Christmas performance in the morning. The children will do some in class PE instead.

### School Dinners & Pack Lunch Process

Reception-Year 6

With effect from Monday 15th December, children will be able to choose from either having a packed lunch or a school lunch and can swap between these on different days which will allow more flexibility.

However, to do this, please note the the following:

- All lunches, including free school meals, should be booked in advance online via Scopay and no longer ordered in the classroom.
- All lunches, apart from free school meals, will have to be paid at the time of booking online via Scopay.
- If your child is bringing a packed lunch into school, please indicate this online via Scopay, even for those children who have packed lunch on a regular basis.
- Dinner choices must be made by **midnight** the previous day.

For children in Years 3 - 6 there will be the usual charge of £2.80 unless you have had confirmation with the office that your child is eligible for benefit related free school meals. Children in Reception to Year 2 are free as they are funded by the Government through Universal Free School Meals.

If you have any questions, please do not hesitate to contact the school office at [office.riverbridge@lumenlearningtrust.co.uk](mailto:office.riverbridge@lumenlearningtrust.co.uk)

### Community

Whole School

The council are exploring the potential of redeveloping part of the Memorial Gardens in Staines, with plans to install a children's playground. The council would like to hear feedback about opening a new playground, if you have a moment, please follow the link below to share your thoughts:

[https://spelthorne.inconsult.uk/connect.ti/newplayarea?fbclid=IwT01FWAOaatRleHRuA2FibQIxMABzcnRjBmFwcF9pZAwzNTA2ODU1MzE3MjgAAR775QjhL9jtbqCS5eqPugYdzG\\_F2vQmzXoWPaKASPegvrZfPRn5YLzEKCC41A\\_aem\\_36aSgZgeE0hxQvi9RzucRw](https://spelthorne.inconsult.uk/connect.ti/newplayarea?fbclid=IwT01FWAOaatRleHRuA2FibQIxMABzcnRjBmFwcF9pZAwzNTA2ODU1MzE3MjgAAR775QjhL9jtbqCS5eqPugYdzG_F2vQmzXoWPaKASPegvrZfPRn5YLzEKCC41A_aem_36aSgZgeE0hxQvi9RzucRw)

### Green Time

Year 5

For Green Time this half term, 5G would like to watch The Chronicles of Narnia: The Lion, The Witch and The Wardrobe. As this is a PG, we need to seek parental permission.

Therefore, if you **do not** wish your child to watch this film, please notify the school office. This is for **5G** only.

### Literacy

Year 4

This half term, Year 4 have been reading Roald Dahl's - The BFG. We are hoping that we will have the opportunity to watch the live-action 2016 movie version before the end of the term. The film has a PG rating, therefore if you do not wish for your child to partake, please email the office or inform your child's class teacher. Thanks in advance.

### Christmas Performance

Year 1

Initially, we decided that the children would get changed at school to help promote independence. However, upon reflection, and to save time, we feel it will work best for the children to arrive *already dressed* in their Christmas outfits on **Wednesday 10th and Thursday 11th December**. To clarify, their

outfit should consist of a **Christmas jumper, black leggings or trousers**, and their **normal black school shoes**. For **1D**, this means that children **do not need to wear their PE kit on Thursday**. If you have already sent your child's outfit into school, it will have been sent home with them. Thank you for your patience. We cannot wait to share our concert with you next week!

## History

Year 1

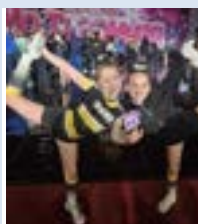


This week, the children in Year 1 enjoyed a special visit from Chertsey Museum. As part of their history topic this half term, they had the opportunity to explore and play with a range of toys from the past. They were fascinated to discover how these old toys worked and to compare them with the ones they play with today, noticing both similarities and differences. It was a fun and engaging learning experience for everyone!

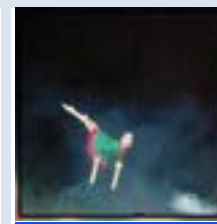


## Outside Achievement

Year 3 & 4



Indie (4P) & Elodie (4GT) came third with their cheerleading team at Future Cheer in Paris, and Cristina (3HT) took part in seven Christmas Display shows at Spelthorne gymnastics. Well done girls for your hard work and dedication.



**PTA**  
FRIENDS OF RIVERBRIDGE

Riverbridge PTA is our school's fundraising community. Everyone's welcome to get involved!

**Thank you to our panto and disco volunteers!**

It's been a busy and fun week, with the Riverbridge PTA panto, Aladdin, last Sunday and our disco parties for Years 1-6 on Wednesday. We hope all the children had a fantastic time!

Thank you to all the parents who volunteered to help out on stalls at the panto and discos. Your support is really important and makes a massive difference to our ability to put on these events for the school community.

If anyone is interested in volunteering for our activities in future, find out more by emailing [pta.riverbridge@lumenlearningtrust.co.uk](mailto:pta.riverbridge@lumenlearningtrust.co.uk)

**Have you bought your nursery/reception party tickets yet?**

For children in nursery and reception, Riverbridge PTA have organised a ticketed Christmas party during school hours on Wednesday 17 December, featuring games and music from local children's entertainer Crazy Hazy.

Tickets are £4.50 per child and on sale at [www.pta-events.co.uk/riverbridge](http://www.pta-events.co.uk/riverbridge).

**Support Riverbridge while you do your Christmas shopping**

Did you know you can help raise money for Riverbridge simply by doing your Christmas shopping?

You can raise FREE donations every time you shop online by visiting [www.easyfundraising.org.uk](http://www.easyfundraising.org.uk) or downloading the EasyFundraising app. Simply search for 'Riverbridge PTA' as your chosen cause, sign up and start shopping.

Over 7,000 brands will donate, including all the big names like John Lewis & Partners, BT, Expedia, Argos, ASOS, Just Eat, Uswitch and more.

## Stay connected with Riverbridge PTA

Follow Riverbridge PTA on Facebook at [www.facebook.com/groups/RiverbridgePrimarySchoolPTA](http://www.facebook.com/groups/RiverbridgePrimarySchoolPTA)  
or get in touch by email at [pta.riverbridge@lumenlearningtrust.co.uk](mailto:pta.riverbridge@lumenlearningtrust.co.uk)

### Gold Leaves

### Whole School

Well done to everyone who has got to gold this week.

Staying on Green all week is a real achievement and obviously this is even more impressive if you reach bronze, silver and, ultimately, gold.

Great job everyone!

Rayhan C	Nahzan O	Paisley M
Demi A	Sonny C	Fareehan A
Mila N	Harry T	Amar T
Aiden F	Yanis C	Jessica T
Zoya S	Emma K	Rex C
Andre GS	Kashika N	Amira A
Shraddha B	Mason B	Fern W
Ishanaa S	Remi C	Hareshna K
Haya T	Tallulah C	Maryam P
Erick L	Cruz H	Anwen RH
Lucas-James L	Ishan K	Evelyn S
Elena N	Lucas B	Evan D
Alex F	Jenson R	Jacob M
Poppy V	Jaxon S	Elsie B
Ishani S	Aiden S	Ishaan C
Alan D	Maahi K	Zoe N
Joshua R	Lennon M	Nicholas N
Jovan S	Leo M	Ahaan P
Noah F	Thomas CS	Willow S
	Alice O	

### Rainbow Awards

### Nursery

To the Hedgehogs and Rabbits children that have reached the Rainbow - I say a big 'well done'. I am sure that the parents and carers that visited over the course of the week were mightily impressed.

Charlie O	Moha K	Nuha Q
Eden E	Eliza K	Tazkia P

### House Competition

### Whole School

As mentioned in the first section above, this week's theme has been using kind words.

It has also been the latest House Competition – Kindness Champions.

I will look forward to sharing results in Monday's assembly.



**80  
Points**



**70  
Points**



**75  
Points**

This year's assemblies have focused on people who have demonstrated any of the school's 8 Great Ways to Being Our Best.

We will find out about their life, how they overcame obstacles and how they demonstrated determination to succeed.

**Frida Kahlo**  
**Artist**



**Active   Ambitious   Independent**

On Monday's assembly we found out about the famous Mexican artist Frida Kahlo.

As a child, she loved to draw, paint and express self in artistic ways. She painted everywhere, when she was happy, when she was sad, when she was brave and when she needed to feel brave too.

She developed an illness that meant she had to spend lengthy times in bed. Rather than stopping her love of art, it only led to her spending more time painting.

Later, she had further bad luck. A bus accident meant that walking became even more difficult for her and her art became even more important.

Today Frida Kahlo's art is known across the world. She overcame challenges and was determined to be herself throughout. Her resilience was an inspiration:

*'At the end of the day, we can endure much more than we think we can.'*

Have a great weekend!

**Paul Grimwood**  
**Headteacher**

**Dates for the diary...**

**Autumn Term 2025**

Monday 8<sup>th</sup> December

Hedgehogs Christmas Performance

Tuesday 9<sup>th</sup> December

Reception Christmas Performance – 9.30am

Tuesday 9<sup>th</sup> December

Year 2,3 Christmas Performance – 2.15pm

Tuesday 9<sup>th</sup> December

Year 4,5,6 Christmas Performance – 2pm

Wednesday 10<sup>th</sup> December

Reception Christmas Performance – 2.30pm

Wednesday 10<sup>th</sup> December

Year 1 Christmas Performance – 9.30am

Wednesday 10<sup>th</sup> December

Year 2,3 Christmas Performance – 2.15pm

Wednesday 10<sup>th</sup> December

Year 4,5,6 Christmas Performance – 9.30am & 6pm

Thursday 11 <sup>th</sup> December	Year 1 Christmas Performance – 2.15pm
Thursday 11 <sup>th</sup> December	Year 2,3 Christmas Performance – 9.30am
Weds 17 <sup>th</sup> December	Nursery & Reception PTA Party
Weds 17 <sup>th</sup> December	Christmas Jumper Day
Weds 17 <sup>th</sup> December	<b>Year 2-6 Open Classrooms</b>
Fri 19 <sup>th</sup> December	End of term for children: 1.20pm KGB, 1.30pm PAB, 1.40pm Nursery
Fri 19 <sup>th</sup> December	No After School Club

**Mon 22<sup>nd</sup> Dec – 2<sup>nd</sup> Jan 2026**

**Christmas Holidays**

Mon 5 <sup>th</sup> January	Children return to school
Weds 7 <sup>th</sup> January	Year 1 Family Learning Session
Thurs 8 <sup>th</sup> January	Year 1 Family Learning Session
Mon 12 <sup>th</sup> January	Reception Open Afternoon
Mon 12 <sup>th</sup> January	Yr 4 Swimming lessons start for <b>4GT</b> only
Mon 12 <sup>th</sup> – Fri 16 <sup>th</sup> Jan	<b>Reception Stay, Play and Learn sessions each morning</b>
Tues 13 <sup>th</sup> January	Reception Open Morning

**Spring Term 2026**

**Mon 16<sup>th</sup> – 20<sup>th</sup> Feb 2026**

**Spring Half Term**

Tues 10 <sup>th</sup> February	Parent consultations
Weds 11 <sup>th</sup> February	Parent consultations
Thurs 12 <sup>th</sup> February	Parent consultations
Mon 23 <sup>rd</sup> February	Children return to school
Weds 25 <sup>th</sup> February	Year 4 Residential Trip – more details to follow
Thurs 26 <sup>th</sup> February	Year 4 Residential Trip – more details to follow
Fri 27 <sup>th</sup> February	Year 4 Residential Trip – more details to follow
Thurs 5 <sup>th</sup> March	World Book Day
Fri 27 <sup>th</sup> March	No After School Club
Fri 27 <sup>th</sup> March	End of term for children: 1.20pm KGB, 1.30pm PAB, 1.40pm Nursery

**Mon 30<sup>th</sup> March – 10<sup>th</sup> April 2026**

**Easter Holidays**

**Summer Term 2026**

Mon 13 <sup>th</sup> April	Children return to school
Mon 4 <sup>th</sup> May	Spring Bank Holiday
Mon 11 <sup>th</sup> May	Yr 4 Swimming lessons start for <b>4P</b> only

**Mon 25<sup>th</sup> – 29<sup>th</sup> May 2026**

**Summer Half Term**

Mon 1 <sup>st</sup> June	Children return to school
--------------------------	---------------------------

Weds 8 <sup>th</sup> July	Year 6 Production
Mon 13 <sup>th</sup> July	Open Classroom/Reception Drop In
Thurs 16 <sup>th</sup> July	Year 6 Party
Fri 17 <sup>th</sup> July	End of term for children: 1.20pm KGB, 1.30pm PAB, 1.40pm Nursery
Fri 17 <sup>th</sup> July	No After School Club
Mon 20 <sup>th</sup> July	Inset day 4
Tues 21 <sup>st</sup> July	Inset day 5

**Weds 22<sup>nd</sup> July – Weds 2<sup>nd</sup> Sept 2026**

**Summer Holidays**

**Autumn Term 2026**

Tues 1 <sup>st</sup> Sept	Inset Day 1
Weds 2 <sup>nd</sup> Sept	Inset Day 2
Thurs 3 <sup>rd</sup> Sept	Children return to school

**Mon 19<sup>th</sup> – Friday 30<sup>th</sup> Oct 2026**

**Autumn Half Term**

Mon 2 <sup>nd</sup> Nov	Children return to school
Fri 18 <sup>th</sup> Dec	End of term for children: 1.20pm KGB, 1.30pm PAB, 1.40pm Nursery
Fri 18 <sup>th</sup> Dec	No after school club

**Mon 21<sup>st</sup> Dec – Mon 4<sup>th</sup> Jan 2027**

**Christmas Holidays**

Tues 5 <sup>th</sup> Jan	Inset Day 3
Weds 6 <sup>th</sup> Jan	Children return to school

**Spring Term 2027**

**Mon 15<sup>th</sup> – 19<sup>th</sup> Feb 2027**

**Spring Half Term**

Mon 22 <sup>nd</sup> Feb	Children return to school
Thurs 25 <sup>th</sup> March	End of term for children: 1.20pm KGB, 1.30pm PAB, 1.40pm Nursery
Thurs 25 <sup>th</sup> March	No after school club

**Fri 26<sup>th</sup> March – Fri 9<sup>th</sup> April 2027**

**Easter Holidays**

**Summer Term 2027**

Mon 12 <sup>th</sup> April	Children return to school
Mon 3 <sup>rd</sup> May	Bank Holiday

**Mon 31<sup>st</sup> May – Fri 4<sup>th</sup> June 2027**

**Summer Half Term**

Mon 7 <sup>th</sup> June	Children return to school
Tues 20 <sup>th</sup> July	End of term for children: 1.20pm KGB, 1.30pm PAB, 1.40pm

Tues 20<sup>th</sup> July

Weds 21<sup>st</sup> July

Thurs 22<sup>nd</sup> July

Nursery

No after school club

Inset day 4

Inset day 5



# LEARN TO SWIM WITH CONFIDENCE!



## WHAT WE OFFER

- ▶ FREE TRIAL LESSON
- ▶ Small class sizes
- ▶ Teachers in the pool with your children (class/level dependant)
- ▶ Progression programme to main pool  
Swim England Level 2 certified teachers
- ▶ Fun and interactive sessions

## DETAILS

Price: from £38 a month

Classes: Monday – Sunday

Times: Level dependant

Location: Staines Swimming Club, Matthew Arnold School, Kingston Road, Staines TW18 1PF

## WHY LEARN TO SWIM?

### SAFETY FIRST

Equip yourself or your child with life-saving skills.


### FITNESS AND FUN

Swimming is a great full-body workout and an enjoyable activity.

### CONFIDENCE BOOST

Overcome fears and build confidence in the water.

**DON'T MISS OUT! SIGN UP TODAY!**

 07885 536 708

 [learntoswim@stainesswimming.org](mailto:learntoswim@stainesswimming.org)

 [www.stainesswimming.org](http://www.stainesswimming.org)

# Winter Fest

## WINTER HOLIDAY CLUBS

**JOURNEY BEYOND THE SNOW WITH US!**



DAY	DAILY THEMED ACTIVITIES	MAKE & TAKE	SKILL ZONE
MONDAY	BLIZZARD IN A CUP	CLAY TREE CHARMS	CANDY CANE CHAOS
TUESDAY	ELFLYMPICS	HOLIDAY GREETINGS STATIONS	FESTIVE FACT FRENZY
WEDNESDAY	RING-THE-REINDEER	REINDEER WRAP-UP	DASHER DODGEBALL
Friday	FIREWORKS LAB	MOMENT IN TIME FOLDOUTS	NEW YEAR ENERGY BLAST

**Daily Adventures powered by our awesome teams and the brilliant ideas of our kids on site!**



**BLIZZARD BASH**

Kick off Winter Fest with a flurry of fun and a whole snowstorm of creativity!



**ELF WORKSHOP**

It's a joyful, laughter-filled workshop where ideas sparkle and every child gets a moment to shine.



**REINDEER ROUND UP**

Expect lots of encouragement, strategy and giggles as teams work together and cheer each other on.



**FRESH START FIESTA**

We round things off with colour, celebration and a focus on the year ahead.





Junior  
Adventures  
Group

# Winter Fest



**WINTER  
HOLIDAY CLUBS**



**SPORTS | TEAM GAMES  
STEM | ARTS & CRAFTS  
MAKE & TAKES | SPECIAL  
EVENT | AND MUCH MORE!**

**JOURNEY BEYOND THE  
SNOW AT WINTER FEST!**

Scan to secure  
your child's spot!





## Journey Beyond The Snow This Winter

Enjoy festive fun this school holiday

The festive season's just around the corner — and before the presents, chocolate, and TV marathons begin, children can dive into something active, creative, and full of holiday cheer at **Holiday HQ: Winter Fest**.


This winter holiday, children aged **5–11** can join us for themed days packed with imagination, movement, and winter energy. With plenty of space to play, sports and team games — plus daily swimming or soft play at selected venues. It's the perfect way to add a little variety to the school break.

Led by friendly, **Ofsted-registered** staff, every session is designed to keep children smiling from drop-off to pick-up — giving parents trusted, flexible childcare they can rely on.


### Daily Themes

Each day features a brand-new theme — so children can enjoy something different every day!

 **Blizzard Bash** – Snow-themed fun with *Blizzard in a Cup* and *Clay Tree Charms*.

 **Elf Workshop** – Creative crafts and friendly *Elflympics* challenges.

 **Reindeer Round-Up** – Festive teamwork with *Dasher Dodgeball* and *Reindeer Wrap-Up*.

 **Fresh Start Fiesta** – A colourful finale featuring *Fireworks Lab* and *Moment in Time Foldouts*.

### A Typical Day at Winter Fest

From creative workshops to high-energy games, each day follows a rhythm of fun and discovery:

### **Hero Activities**

Big themed adventures that bring each day to life — from *Elflympics* relays to colourful science in *Fireworks Lab*.

### **Make & Take Workshops**

Creative crafts such as *Clay Tree Charms* and *Reindeer Wrap-Up* gift paper — made with pride and taken home as keepsakes.

### **Skill Zone Challenges**

Confidence-boosting games like *Candy Cane Chaos* and *Festive Fact Frenzy*, encouraging teamwork, curiosity, and problem-solving.

### **Sports & Team Games**

High-energy favourites that get children moving, laughing, and building friendships.

### **Flexibility When You Need It Most**

Plans change. Whether it's a last-minute meeting, a work event, or an unexpected errand, Winter Fest fits around your family.

Amend or cancel up to **48 hours before** a session, and any credits go straight back to your account for next time.

### **Smarter Ways to Save**

December can stretch even the best-planned family budgets.

With the Government's **Tax-Free Childcare** scheme, most families save **20%** on childcare costs — and registration only takes a few minutes.

For every **£8 you pay in**, the Government adds **£2**, giving you more to spend on holiday clubs and wraparound care.

### **Check Your Eligibility**

### **Bookings Now Open**

Secure your child's space today and tick one more thing off your to-do list.

### **Make a Booking**

live brass  
band

# This Christmas we're bringing The Snowman to life

Saturday 13 December  
Salesian School, 1:30pm  
Guildford Rd, Chertsey, KT16 9LU



Sunday 14 December

St. Michael Catholic Primary Sch, 3 & 5pm  
Feltham Hill Rd, Ashford, TW15 2DG

[www.ticketsource.co.uk/  
staines-brass-band](http://www.ticketsource.co.uk/staines-brass-band)

£12 adult, £6 child  
£30 family of four





# TICKETS



**Wheatsheaf Park**

Monday 24 November • 7pm kick-off

# COMMUNITY SUPPORT GROUP FOR MUMS WITH ADHD/ASD

**THURSDAY 8 JANUARY 2026**

**11AM TO 1PM**

**THE LUCAN TEAROOMS, THE LUCAN PAVILION,  
THE BROADWAY, LALEHAM, STAINES TW18 1RZ**

Join us for a warm, welcoming space to share experiences, connect, and feel understood. This group will meet monthly, offering gentle support and community.

**No pressure, just connection.**



# COMMUNITY SUPPORT GROUP FOR MUMS WITH ADHD/ASD

**MONDAY 26 JANUARY 2026**

7 PM TO 9 PM

THE LUCAN TEAROOMS, THE LUCAN PAVILION,  
THE BROADWAY, LALEHAM, STAINES TW18 IRZ

Our monthly meet-ups offer a warm space to share experiences and feel truly understood. Sessions will explore relevant topics with guest speakers, providing knowledge and community.

A safe place just for you. ❤️

